



## **MELBOURNE CENTRE FOR NANOFABRICATION ACCESS AND PRICING POLICY**

The purpose of this document is to provide guidance and pricing models for accessing the Melbourne Centre for Nanofabrication central facility (hereafter referred to as the MCN) as either an external user or a partner with preferential access rights.

### **A. Organisation Matters and Policies**

1 The Melbourne Centre for Nanofabrication (MCN) Node of ANFF is one of a number of collaborative nodes of the Australian National Fabrication Facility Limited (ANFF) , a national network of micro and nano fabrication laboratories established through the DEST National Collaborative Research Infrastructure Strategy (NCRIS)

2 As a condition of its funding support through NCRIS , the external user access to the Node must be consistent with the general principles laid out in the national ANFF Access and Pricing Policy.

3 The Node is hosted within Monash University and as a result all ANFF node users must satisfy all Monash University policies and procedures, including OH&S policies, guidelines and Out of Hours together with the specific procedures of the MCN.

4 The Node budget is used to support fabrication equipment, technical staff and infrastructure operating costs as defined in the funding agreements with ANFF / NCRIS.

5 The Node's Facility Manager has day-to-day responsibility for liason and oversight of all users and staff, together with management of the Node budget in liason with the Node Director.

### **B. Access for New Users or Processing Requests**

1 The MCN Facility Manager is the first point of contact for all potential users of the Node ( via telephone/ email) . Users may be directed to the Facility Manger via ANFF headquarters or via other Nodes of the ANFF.

2 The Facility Manager will liase with the potential user and the process experts

at MCN to assess the scope and viability of the work required.

3 The formal application process for accessing the Node will be to complete a Job/User proposal (less than two pages) describing the work, the expected outcomes, funding source if applicable, the equipment and staff resources required ( including estimated training time). The Facility Manager will assist the user in preparing this Job/User proposal.

4 Job/User proposals will be assessed by the Access Committee chaired by the Facility Manager.

5 If the Job Proposal does not involve work in the MCN by a new user, the work will be undertaken by MCN staff at a pricing level as set out in section C below.

6 In the case of a User Proposal for a new user , the user will then have to undergo the standard MCN OHS induction procedure before they begin any work in the MCN. If the user is not a Monash University staff member or student , then they must be given visitor status for work on Monash University premises.

7 In addition to other requirements, the ANFF-MCN User Agreement and ANFF-MCN Node Payment form must be completed and returned to the Facility Manager before user access can commence or a job can commence.

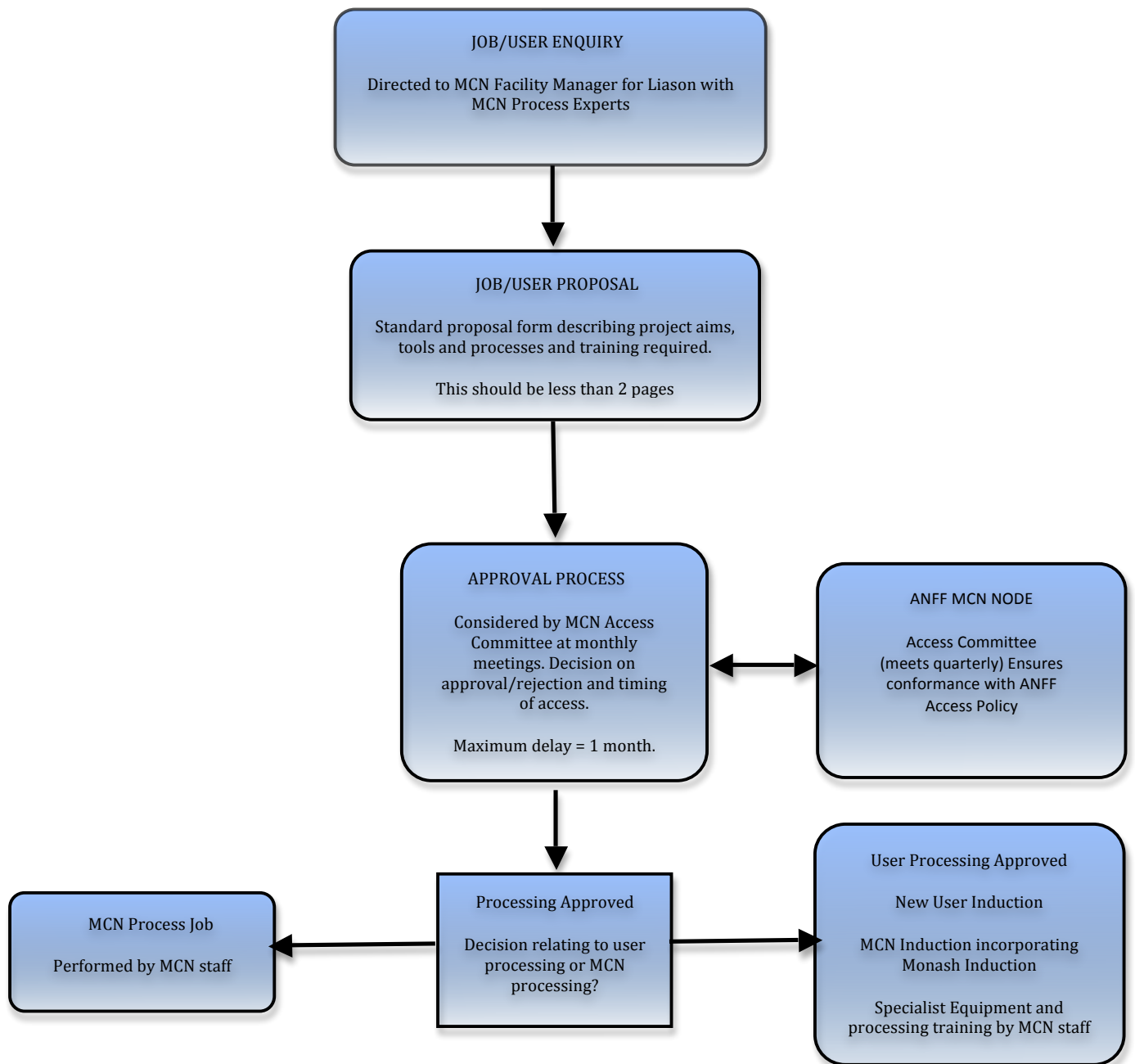
8 Job/User Approvals remain valid for 12 months. For jobs or user access which will continue beyond 12 months, a new Job/User Proposal must be completed (resulting in a new job number) seeking approval for the continuation of the project beyond the initial 12 month period.

9 The ANFF-MCN Node reserves the right to revoke Job/User Approvals with seven days written notice.

10 The Node Access Committee will review the decisions of the MCN Executive Group at regular meetings, currently set at quarterly intervals, to ensure that access to the Node is in accord with the guidelines set out in the national "ANFF Access and Pricing Policy" and as requested by DEST.

11 The Node Access Committee is composed of the ANFF CEO, the Node Director, the Facility Manager and representatives from the major user groups

Below is a flowchart indicating the required access protocol for use of the MCN.



## **C Pricing Structure**

A provisional pricing schedule for the MCN , in accordance with ANFF documentation, is indicated below in Table 1. Basic consumables are included in cost price; however, specialised consumables (e.g. substrate materials) or retooling will be charged to the user at cost. Cost for access to flagship instruments is indicated in the top scale of the pricing structure with general lab access and non flagship instruments (micron scale fabrication) being indicated by the lower end of the scale.

Heavily subsidised access to the Facility is available for new device/materials research which requires “proof of principle” in order to secure grant funding. This is strongly encouraged and will be judged on merit by the access committee.

For further details contact the Facility Manager.

Table 1, Pricing regimes for basic access to the MCN

The key for the pricing schedule is listed below and correlates the user category

Support Provided	PhD Student	University/ PF Researcher	Industry User
Unassisted	A	B	C
Assisted	D	E	F

Pricing for public sector researchers is based on marginal costs only. The above charges are subject to review and may be changed without notice.

It is noted that to gain unassisted status, researchers must complete application specific and assessed training provided by the MCN in addition to all other induction, operational health and safety and training requirements.

*Note that pricing and access for in-kind equipment and facilities at MCN Participant Organisation's laboratories will be determined by the facility managers at those laboratories.*

#### **4 Charges Relating to Access of MCN Facility and Equipment**

Table 2

Equipment	Booking	A	B	C	D	E	F
Cleanroom	Hourly	\$50	\$50	\$100	\$75	\$100	\$150
Bio Lab	Hourly	\$40	\$40	\$100	\$50	\$50	\$150
EBL	3-7 hrs				\$200	\$250	\$400
DRIE (per system)	3-7 hrs	\$100	\$150	\$200	\$150	\$200	\$300
PECVD	3-7 hrs	\$100	\$150	\$200	\$150	\$200	\$300
FIB	3-7 hrs	\$75	\$100	\$150	\$100	\$150	\$200
SEM	Hourly	\$75	\$100	\$150	\$100	\$150	\$200
PVD (EBEAM)	3-7hrs	\$75	\$100	\$150	\$100	\$150	\$200
PVD (SPUTTER)	3-7hrs	\$75	\$100	\$150	\$100	\$150	\$200
POLYMER SYSTEM	3-7 hrs	\$75	\$100	\$150	\$100	\$150	\$200
NIL/EMBOSSING	3 hrs	\$75	\$100	\$150	\$100	\$150	\$200
AFM	Hourly	\$75	\$100	\$150	\$100	\$150	\$200
CONFOCAL	Hourly	\$75	\$100	\$150	\$100	\$150	\$200

*n.b EBL is initially assisted access only.*

#### **5 Access Cost Plans Available**

Access can be gained by several work models which consist of the following:-

- ! Assisted or unassisted access to a specific (typically non-flagship) instrument on an hourly or per use basis under a set hourly fee.
- ! Assisted or unassisted access to a flagship instrument on an hourly or per use basis under a negotiated fee (case specific).
- ! Access to all of the tools in the facility for a set hourly/daily fee – i.e. a single price covering multiple instrumentation.
- ! Process based access on a cost-per-sample basis, typically this is applied to commercial customers who are used to this style of pricing model.
- ! Subscriptions in the form of block purchases of time within the facility. Once in the facility users can utilise any items available (typically excluding some flagships items requiring operator assistance).

In the case of Subscription the following table indicates a membership rate which is heavily discounted against the standard access rate.

<i>Membership Class</i>	<i>Rate</i>
50 hour increments	
* First 50 hours	\$1750
* Subsequent 50 hours top up	\$1500
100 hour increments	
* First 100 hours	\$3000
* Second 100 hours	\$2000
* Subsequent 100 hours top up	\$1500

*For subscription customers, access to flagship or equipment with an hourly access charge of greater than the standard cleanroom/laboratory rate of \$50 will be deducted on a pro rata basis. For example one hour of EBL at \$150 per hour would be deducted at the rate of 3 hours from the allowance. The administration and allocation of the subscription would be the responsibility of the institute purchasing the subscription unless otherwise agreed with the Facility Manager.*

Steve Walker  
MCN Facility Manger

[steven.walker@mcn.monash.edu.au](mailto:steven.walker@mcn.monash.edu.au)  
0419 413 604